

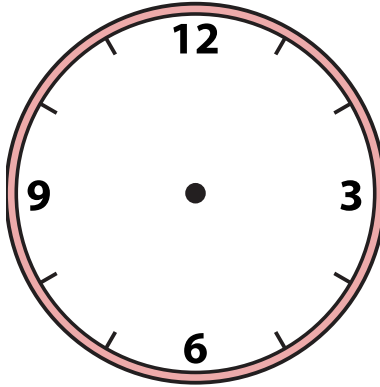


Draw the hour and minute hand on the clock so it represents the time shown.

1) 3:02



2) 10:17



3) 7:47



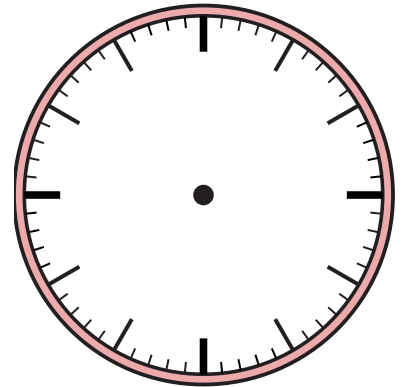
4) 5:14



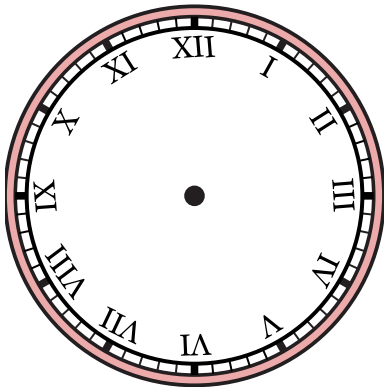
5) 12:17



6) 12:15



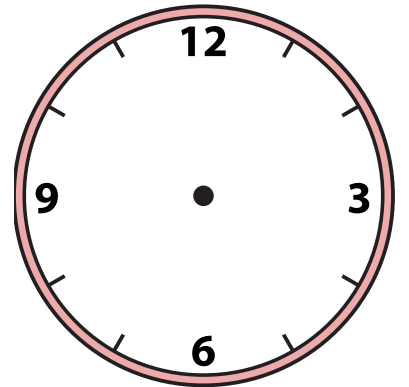
7) 6:14



8) 12:52



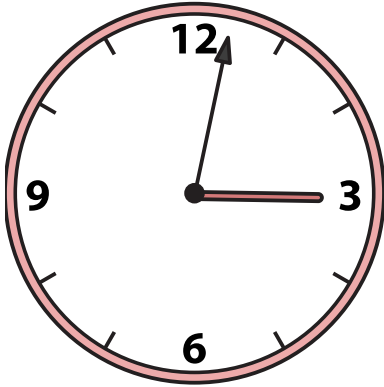
9) 12:18



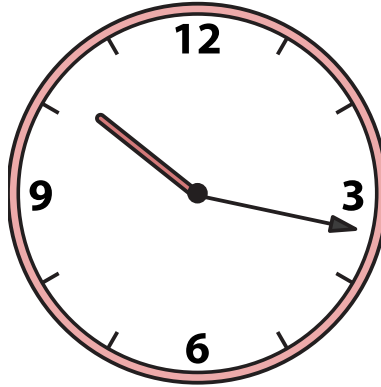


Draw the hour and minute hand on the clock so it represents the time shown.

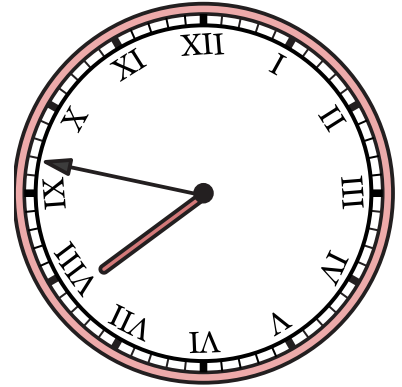
1) 3:02



2) 10:17



3) 7:47



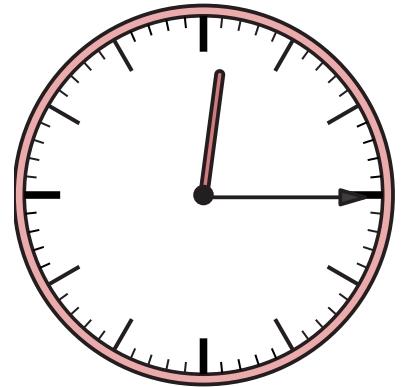
4) 5:14



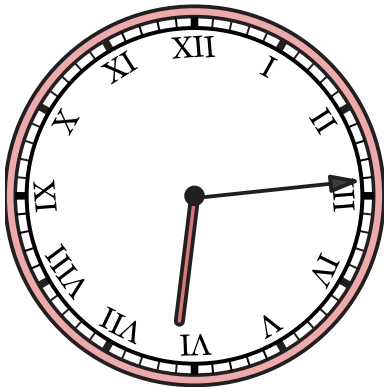
5) 12:17



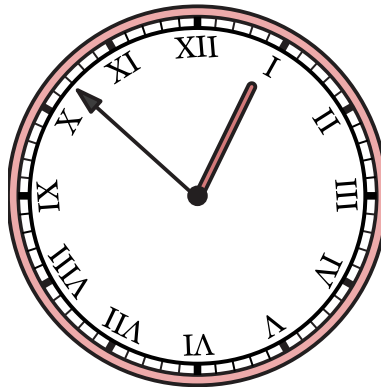
6) 12:15



7) 6:14



8) 12:52



9) 12:18

