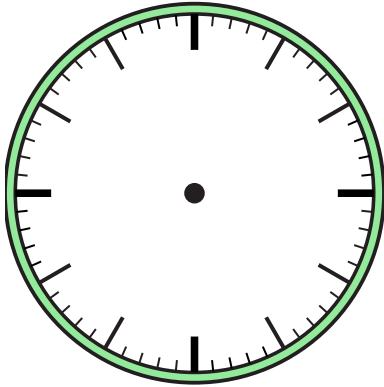


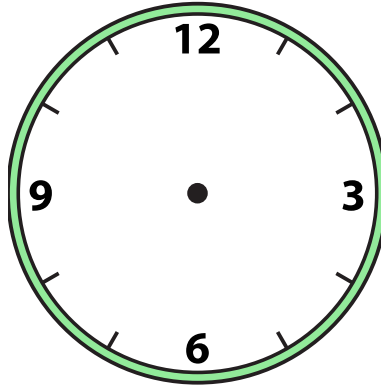


Draw the hour and minute hand on the clock so it represents the time shown.

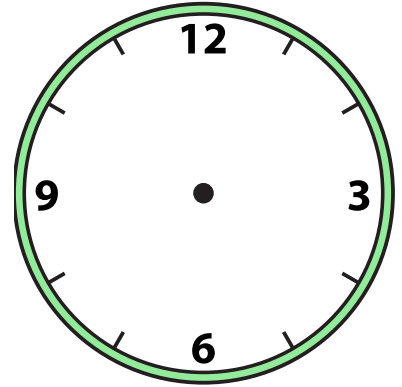
1) 3:30



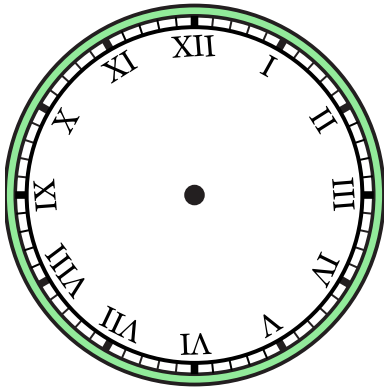
2) 3:00



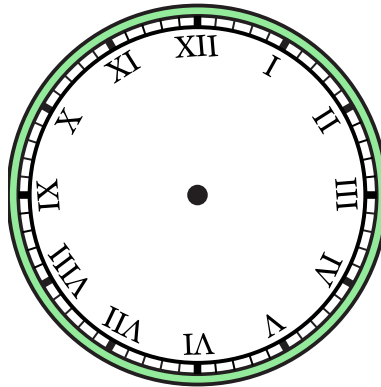
3) 4:30



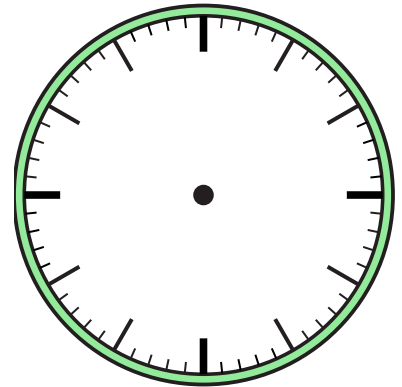
4) 8:30



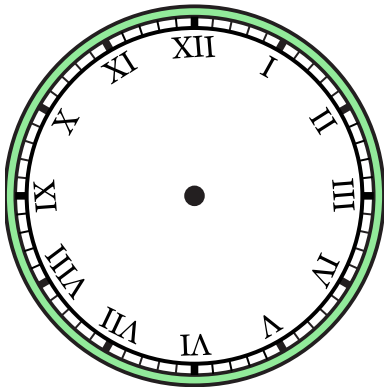
5) 1:30



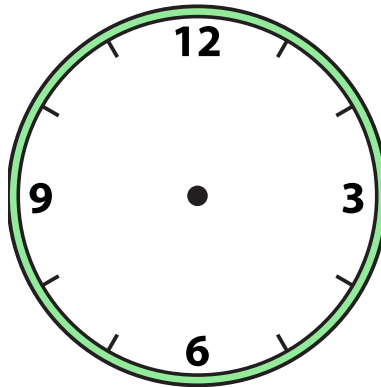
6) 9:00



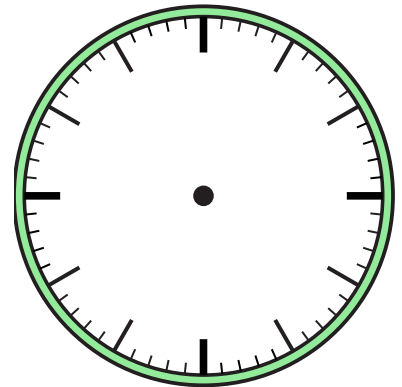
7) 7:00



8) 6:00



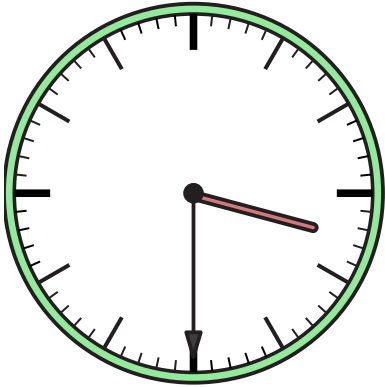
9) 5:00



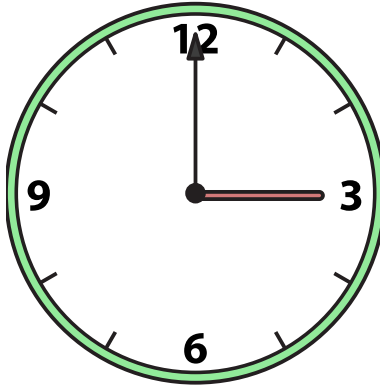


Draw the hour and minute hand on the clock so it represents the time shown.

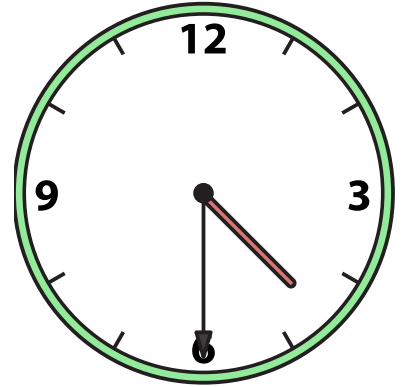
1) 3:30



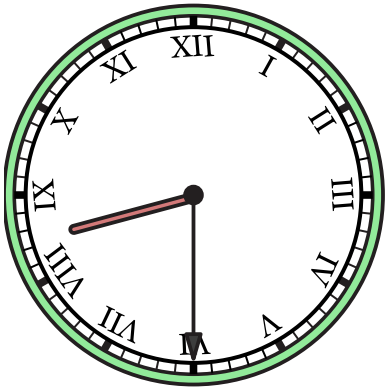
2) 3:00



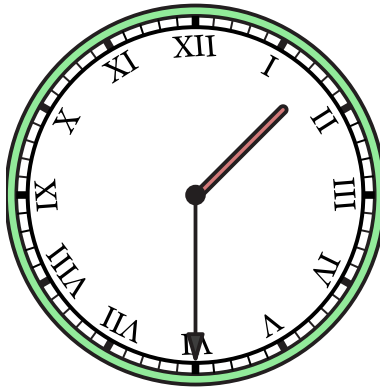
3) 4:30



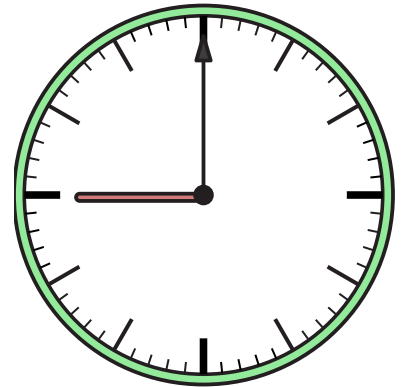
4) 8:30



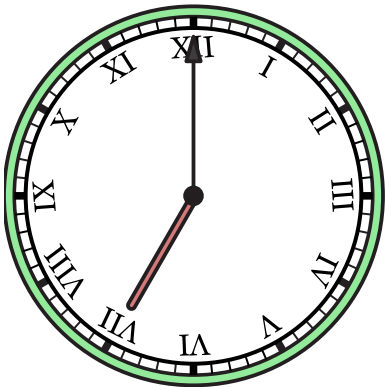
5) 1:30



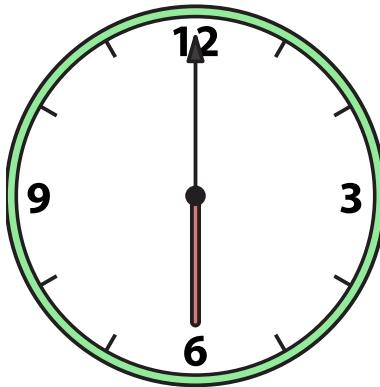
6) 9:00



7) 7:00



8) 6:00



9) 5:00

